

AnyFleet

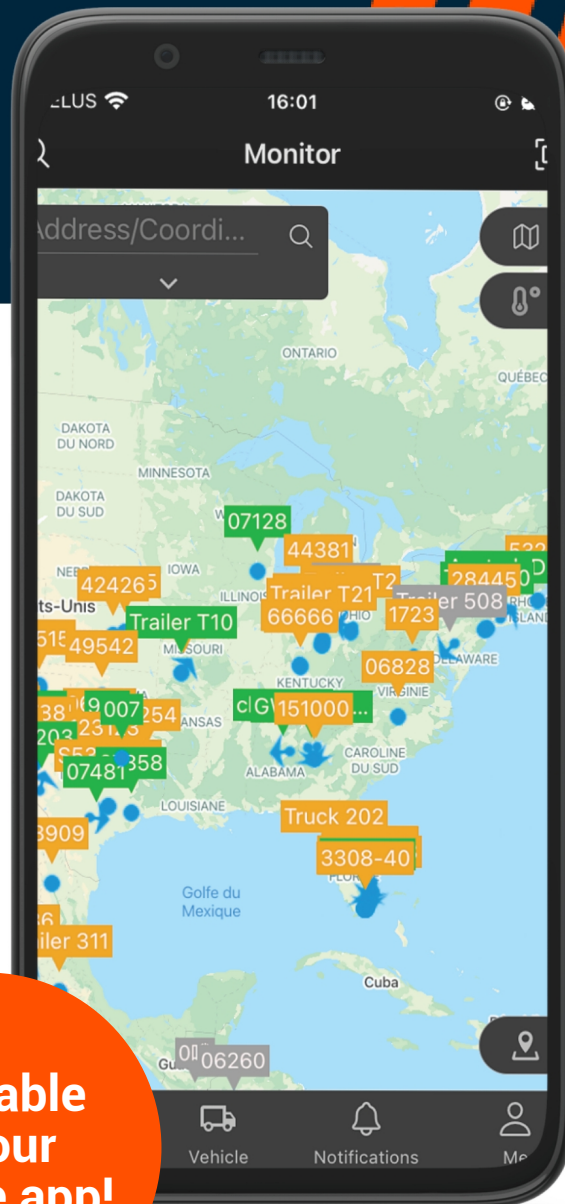
**Track and Manage Your Assets
Anytime, Anywhere**

**All the information you need,
only two clicks away!**

AnyFleet is a secure one-stop platform for remote centralized management accessible for free by purchasing any of our GPS tracking products. It features data analysis, intelligent information management, and remote monitoring. It also offers stable and flexible functions to keep all assets secure and provides clients with upgraded service through digitization. With the value enhancement advantage that making the most of your assets provides, one person can easily manage 1,000 tracking devices! AnyFleet's ease of use significantly improves the efficiency of your business. Once you become an Anytrek customer, your tracking data is securely stored and stays accessible by you for as long as you remain a customer. We don't charge for storage and don't set an expiration period. Save time, money and prevent problems with Anytrek!



**Available
on our
mobile app!**



**You can now see your equipment
on any device.**

Our AnyFleet platform supports multi-device access: PC, mobile phones with Android, iPhone, iPad, or any Internet-enabled device. Our new mobile application allows you to access all the information you need anywhere you are!

Anytrek
Smart Trailer Solutions

Head Office
4405 E Airport Dr. #106
Ontario, CA91761

+1 (844) 872-6987
help@anytrek.com
anytrek.com

T-MOBILE
FOR BUSINESS
SELECT PARTNER

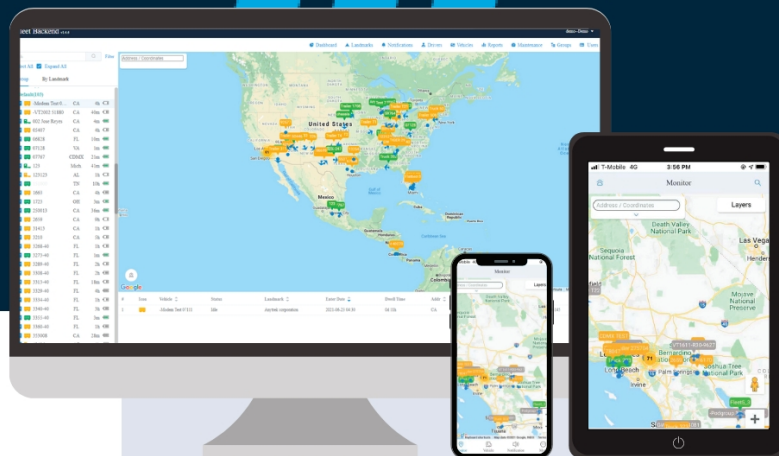
AnyFleet

Track and Manage Your Assets
Anytime, Anywhere

Our Web Portal has many Features to help you
improve the efficiency of your Business.

Many of our clients have used it to integrate the data provided by any of Anytrek's GPS tracking products into their management platforms. Our APIs are secure, robust and use industry-standard REST API calls that in most cases allow for integration to occur in minutes. Clients using software from any of our integration partners (shown below) will be able to start using any GPS tracker from Anytrek immediately without having to do anything.

API's for easy integration, already certified with:



Manage your Assets with Accurate Data



Instantly Check Your
Yard Inventory



Locate Assets By
Groups or Landmarks



Secure, quick and
simple integration into
3rd party TMS



Comprehensive
Maintenance
Notifications



Informative Alerts
Sent Via
Phone & Email



Real-Time
Location



Yard Inventory &
Maintenance Reminders



Asset Utilization
Report



Landmarks &
Geofencing



Breadcrumb Trails



Head Office
4405 E Airport Dr. #106
Ontario, CA91761

+1 (844) 872-6987
help@anytrek.com
anytrek.com

